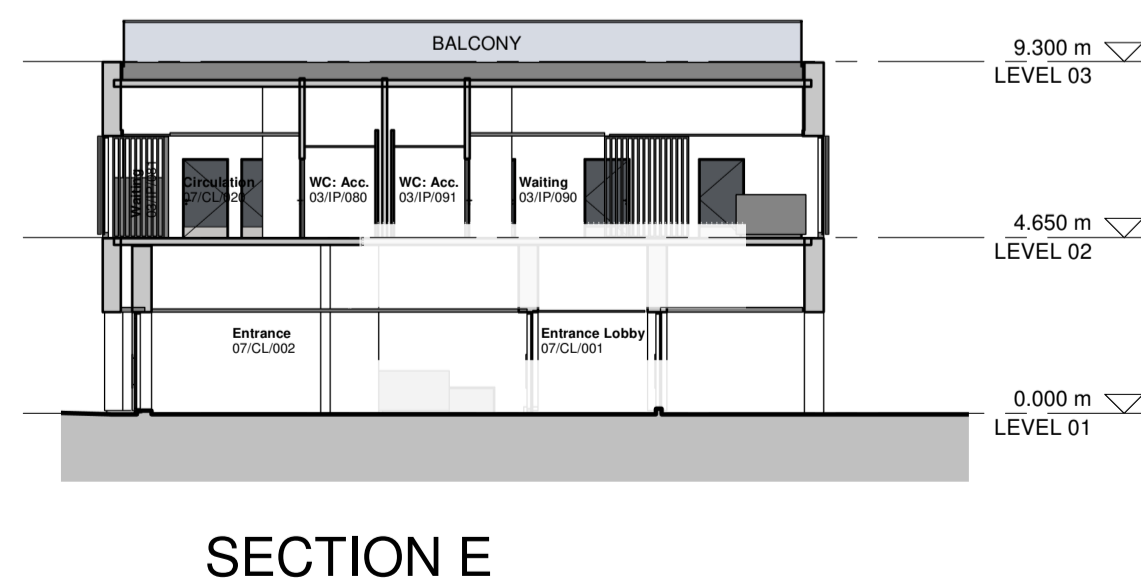
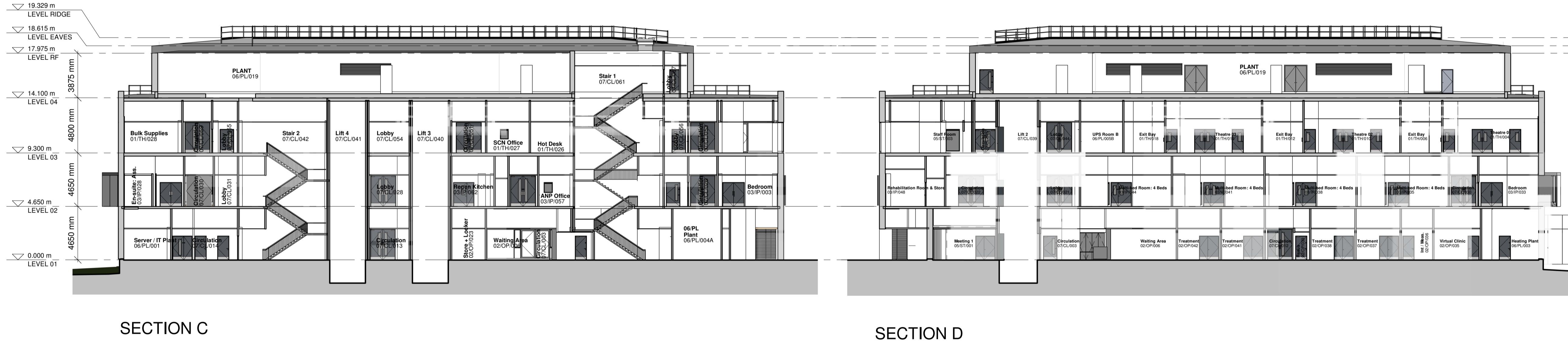


ISO A1 - 594mmx841mm



| DATE | REVISION | REV | DR | CHK |
|----------|----------------------|-----|----|-----|
| 31/01/20 | Stage 3 Issue | P01 | SC | NP |
| 27/04/20 | Plant level revision | P02 | CC | NP |
| | | | | |
| | | | | |
| | | | | |
| | | | | |
| | | | | |
| | | | | |
| | | | | |
| | | | | |

This drawing has been prepared solely for the use of NHS FIFE and there are no representations of any kind made by NORR Consultants Limited to any party with whom NORR Consultants Limited has not entered into a contract

This drawing must not be used, reproduced or revised without written permission.

This drawing shall not be used for construction purposes until the "CONSTRUCTION" status appears under the Sheet Status.

Constructors must only work to figured dimensions which are to be checked on site. Do not scale from hard copy drawings

North Arrow

Detail Symbol

Detail No.

Sheet No.

NORR
NORR Consultants Limited.
An Ingenium International Company

SkyPark 5, Suite 1A
45 Finnieston Street,
Glasgow G3 8JU
Scotland, UK
norr.com

| | |
|-----------------------|--------------------|
| Drawn SBC | Date 31/01/2020 |
| Checked NP | Date 31/01/2020 |
| Scale 1 : 200 @ A1 | |

Client
NHS FIFE

Project
FIFE ELECTIVE ORTHOPAEDIC CENTRE

Drawing Title
GA SECTIONS

Sheet Status
S4 - FOR APPROVAL

Project No.
IAGG19-0018

| | |
|-----------------------------------------|-------------|
| Drawing No. EOC-NOR-XX-XX-DR-A-00201 | Rev. P02 |
|-----------------------------------------|-------------|