

NHS Fife Elective Orthopaedic Care Centre Victoria Hospital

Community Newsletter

Issue 8 | June 2022

Dear Neighbour,

Welcome to issue 8 of our community newsletter for the Fife Elective Orthopaedic Care Centre at Victoria Hospital, Fife. This project is being delivered for NHS Fife by GRAHAM, appointed as the main contractor

The GRAHAM team aims to keep the local community and hospital staff, visitors and patients updated on site progress and planned works during the contract. The new centre will open in 2023.

Project Works Update

Since our last newsletter works have been progressing well. We have completed all roof works, window installations, and have been installing the building's rainscreen cladding (the silver metal panels) that can be seen in the picture opposite.

From June 2022 we will be focussing on completing the building cladding and working on the internal fit out, which includes rooms, theatres, x-ray and consultation rooms, some of the finished bedrooms can be seen below.

Future Site Setup & Changes

Roadworks at the A&E ambulance entrance & drop-off road are planned for mid-June to end of July to allow the construction of new walls and footpaths. The site entrance roadworks will then commence in July to enable the installation of new pedestrian barriers and footpaths, leading to the new hospital, in readiness for completion.

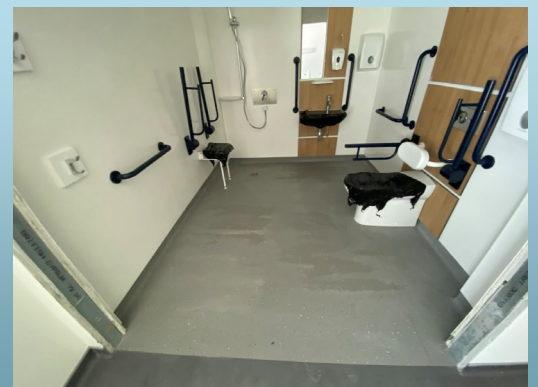
Public/visitor parking is still available at Car Parks L1 and L2, and new accessible/disabled parking facilities are available adjacent to the A&E entrance.



Artistic impression of the completed Elective Care Centre



Single Patient Bedrooms



Single Bedroom En-Suite

Progress Photographs

The online webcam, available through the NHS Fife website, has an interactive 3D model which overlays a model of the new building onto the aerial photo as seen below. This gives you a great idea what the new hospital will look like in the near future.



Aerial Photo, December 2021



Aerial Photo, May 2022



Aerial Photo illustrating interactive 3D Model Overlay

NHS Blink App

All NHS Staff: you are able to follow the latest updates and newsletters for this project on your **blink** app.



Alternatively, you can scan the QR code and complete the CCS questionnaire to give us feedback on the project:

Employment & Experience

We have welcomed more than 60 work experience students, all from Fife, including Levenmouth Academy, Beath High School, Kirkcaldy High School and Inverkeithing High School.

We have also had several school visits for *Careers in Construction* advice and demonstrations.

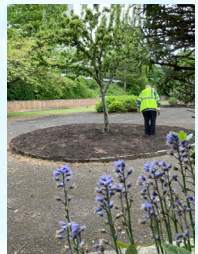
The project has supported 7 new apprenticeship starts, 9 graduate starts and GRAHAM has employed 6 local people for the project. These include more recently a labourer and assistant site manager.

Community Engagement

To date we have carried out 10 community projects, including, supporting the Fife Health Charity and the local Hayfield Community Food Bank.

At the start of May, the team gave up their weekend to reinstate and fix planter areas in the contemplation garden (old tennis courts) for NHS Staff and visitors. This included fixing broken kerbs, bedding new compost and planting fruit trees and wildflower seeds as part of Environmental Day.

And this is just the start! In June and July we are planning to level the ground with new gravel areas, repair damaged tar at the entrance, by way of saying thanks to the NHS with an aim to make this garden a great area to use in the summer to have a break, some lunch or just to relax.



Considerate Constructors Scheme (CCS)

GRAHAM is a Partner Member of the Considerate Constructors Scheme (CCS) and, as a Partner, GRAHAM is committed to improving the image of the construction industry by striving to promote and achieve best practice on all its sites.

RESPECT THE COMMUNITY

CARE FOR ENVIRONMENT | VALUE THE WORKFORCE

The project is periodically assessed by the CCS and the GRAHAM site achieved a score of 49/45 achieving top marks with extra points awarded for innovation and best practice.

If you have any queries, please contact the Project Manager at the site by phone or email or contact CCS on 0800 783 1423.



Project Contact Details

Visit us at graham.co.uk

Project Manager | Chris Law

E: chris.law@graham.co.uk

6 Deer Park Avenue (Ground Floor)
Fairways Business Park
Livingston
EH54 8AF

T: 01506 445130

If you have any queries or concerns, or if you would like any further information, please do not hesitate to contact us. GRAHAM apologises in advance for any inconvenience that these works may cause.

